

Transport and communication



People need to travel from one place to another. We use different vehicles to travel or to transport cargo.

Listen and find. 45

Listen to the descriptions.

Which means of transport are described? 46

Rail transport

Marine transport

Road transport

Air transport

Can you see anybody communicating?

What do we find on or near a road, for example:
traffic lights?

My words

Aircraft, goods, cargo, path, steel, facilities, fee,
to fly, to travel, to indicate, to prohibit.



Means of transport

Transport is the movement of people and goods from one place to another. We have invented different means of transport. **Means of transport** refers to the different vehicles which we use for travel or to transport cargo. Transport can be by land, by sea or by air.




A train station.

Land transport

Road transport is the movement of people and cargo on roads. Roads are routes or paths between two or more places. Motorcycles, cars, buses, and lorries travel on roads. These means of transport are the most popular. Some of these means of transport are individual, like motorcycles. Buses are means of collective transport because they offer a public service to many people.



A road.

-  **1** What other means of road transport offer a public service?



Rail transport is the movement of people and cargo by train. Trains move on railways. Railways are two parallel steel rails. Modern trains use electricity to move, and generate less pollution than road transport. Trains are means of collective transport, they offer a public service. The underground is also a form of collective rail transport.



Rail transport.



The AVE (*Alta Velocidad Española*) is a high speed train in Spain.

-  **2** Which means of transport would you use to transport a lot of cargo from one city to another?
-  **3** What is the longest journey you have made by train?

Air transport

Air transport is transport using aircraft. Aeroplanes and helicopters are the most common forms of aircraft. Air transport is the fastest transport, but also the most expensive and polluting. Aeroplanes are a means of collective transport. They take off and land at airports.



An airport.



- 4 Have you ever travelled by aeroplane? Do you know how many kilometres you travelled? How long did it take you?

Marine transport

Marine transport is the transport of people and cargo by boat or ship over an ocean or sea or rivers. Ships can transport a lot of people and cargo. Marine transport is the cheapest way to move cargo, but is also the slowest. Ports are made to receive boats and transfer cargo. Large ports have cranes to load and unload the ships.



A crane.

My world fact

The Queen Elizabeth II is 293.5 metres long, which is the equivalent of about two and a half football fields!




The Queen Elizabeth II.



- 5 Can you **think** of any other famous ships?

Now I know

-  **Copy** the chart into your notebook. **Write** the words in the correct column.

Road transport	Rail transport	Air transport	Marine transport

aeroplane ship train lorry boat helicopter car motorbike bus underground

The road network

Major roads

In Britain, major roads are normally referred to as **motorways**. Some of these roads are **toll roads**: drivers have to pay money, a toll or fee, to use them. Motorways usually have three or more lanes in each direction. These roads have a lot of traffic and connect major cities and towns.



Motorways connect cities and towns.

1 Can you ride your bicycle on a motorway?

Minor roads

These roads have less traffic than motorways. In Britain, these roads normally have two lanes but sometimes have only one lane.



How many lanes does this road have?

Urban roads and rural roads

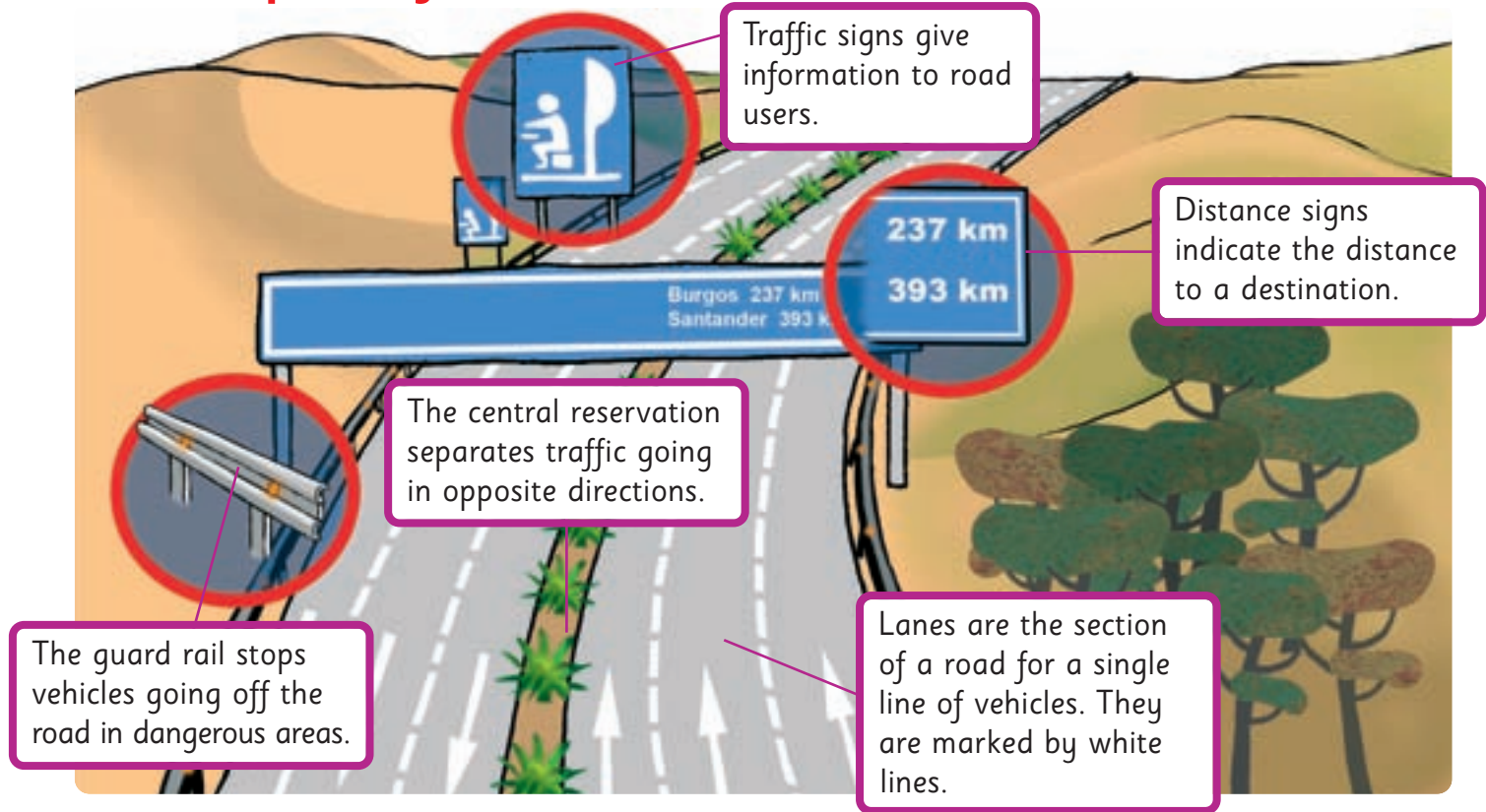
Urban roads are roads found in a town or city. The speed limit on these roads is lower than on motorways. **Rural roads** do not have a lot of traffic. They connect villages or small towns. Apart from motor vehicles such as cars, lorries and motorcycles, we sometimes see cyclists riding their bikes on rural roads.



Riding a bike.

2 What is the difference between an urban road and a motorway?

The parts of a road



1 Look at the pictures. Match them with the right type of road.



Rural road

Urban road

Motorway

Now I know

Copy and complete the sentences.

1. A major road with three or more lanes is called a
2. On roads drivers pay a fee to use them.
3. roads are found in cities and towns.
4. The area which separates lanes of traffic is the reservation.

toll

urban

motorway

central

Traffic signs

A **traffic warning sign** is a sign that tells drivers that a road is dangerous. These signs are often white or yellow triangles with a thick red border.



Dangerous curves



Animals near the road



Roadworks or construction



- 1 Can you think of any other traffic warning signs?
Do you know what they mean?

Prohibition traffic signs prohibit certain types of actions and establish speed limits.



No entry



Speed limit



No left turn



- 2 Can you think of any other prohibition traffic signs?
Do you know what they mean?

Mandatory traffic signs indicate a specific action or restriction. They have a white image, or pictogram, on a blue background.



One way



Pedestrian crossing



Roundabout

Communication

SMS

SMS is a way to send short messages to and from mobile phones. SMS means: **short message service**. We can also send videos and photographs with mobile phones.



1 Answer the SMS.

The Internet

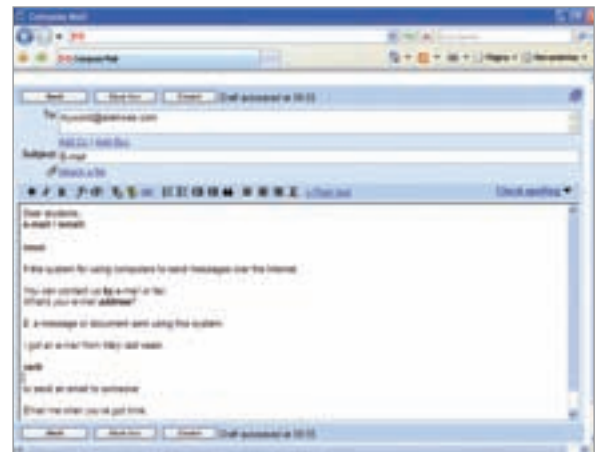
The Internet is a global system of computer networks. It connects hundreds of millions of people worldwide.



2 Have you ever used the Internet?
Can you remember any of the web pages you used?

E-mails

An e-mail, or **electronic mail**, is the electronic transmission of messages, letters, and documents using the Internet. We can also send photos or music by attaching them to an e-mail.



Now I know

Correct and write the sentences in your notebook.

1. Traffic warning signs indicate tolls.
2. Prohibition signs indicate distances.
3. Messages, letters, photos and songs can be sent by SMS.

My turn

Make a traffic sign 47

Materials:

Sheets of coloured card

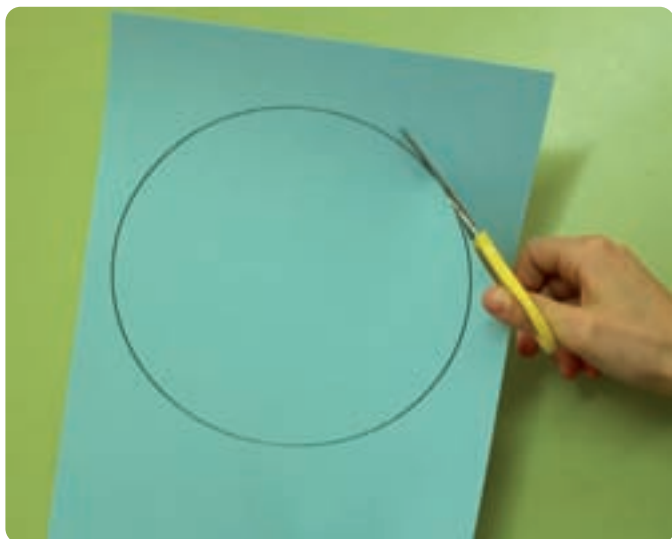
Scissors

Glue

Pencil



Choose one of the traffic signs we have studied. It can be a prohibition sign, a warning sign or a mandatory sign.



1. Draw and cut out the shape of the sign.



2. Draw the pictogram on another sheet of card. Cut it out.



3. Stick the pictogram on your sign.



4. Now you have your own traffic sign!

Our world

Road safety



1 How many road rules do you know?

Before crossing the road

- Stop, look left and right. Wait until there is no traffic. Check drivers have seen you, then cross the road.
- Be careful when you cross a street with no traffic lights.
- Never run out onto the street.
- Don't play near roads.

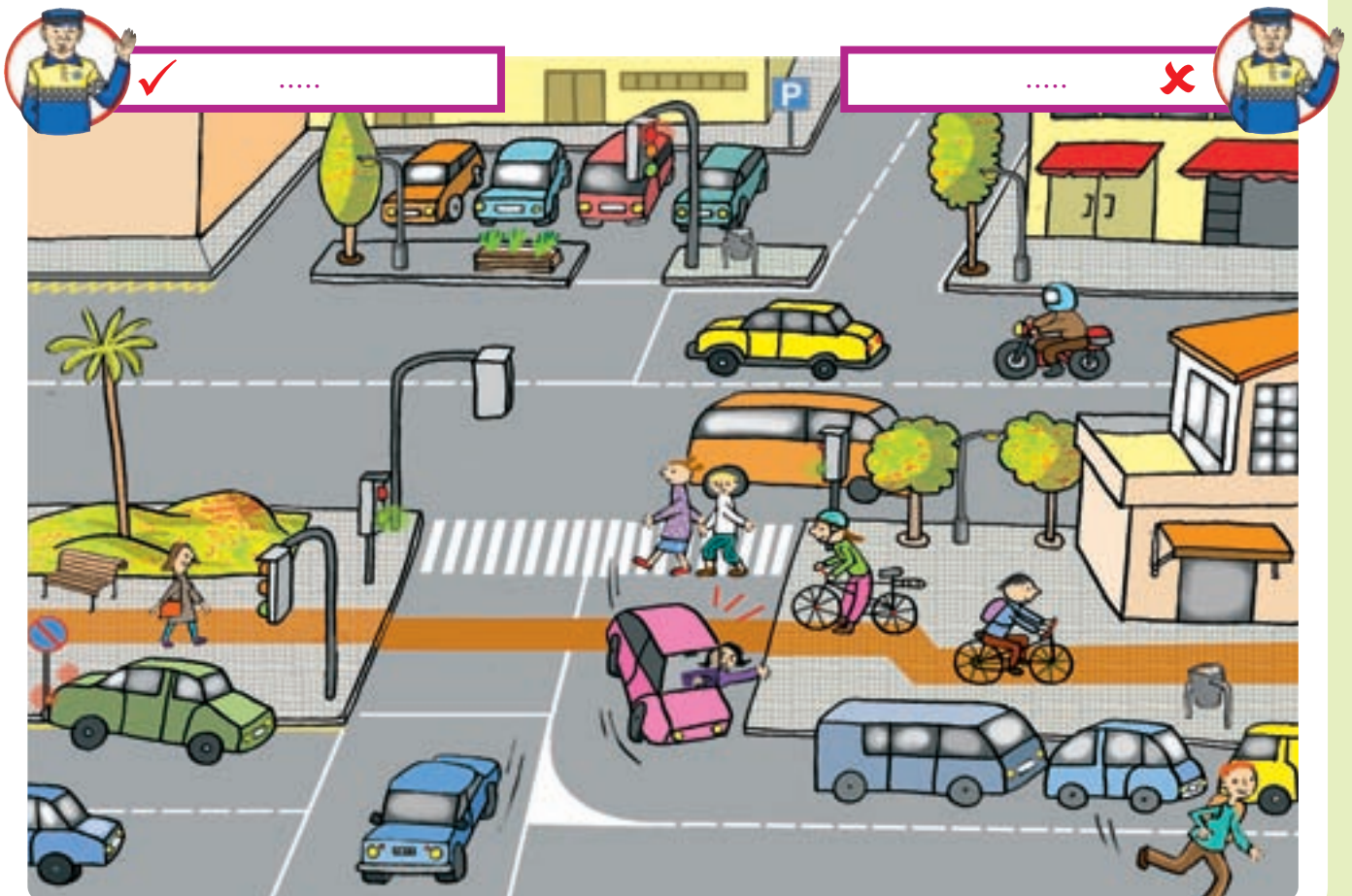


When you are riding your bike

- Always wear a helmet.
- Obey all the rules of the road and traffic signs.
- Stop your bike before crossing a road and look left and right for cars.



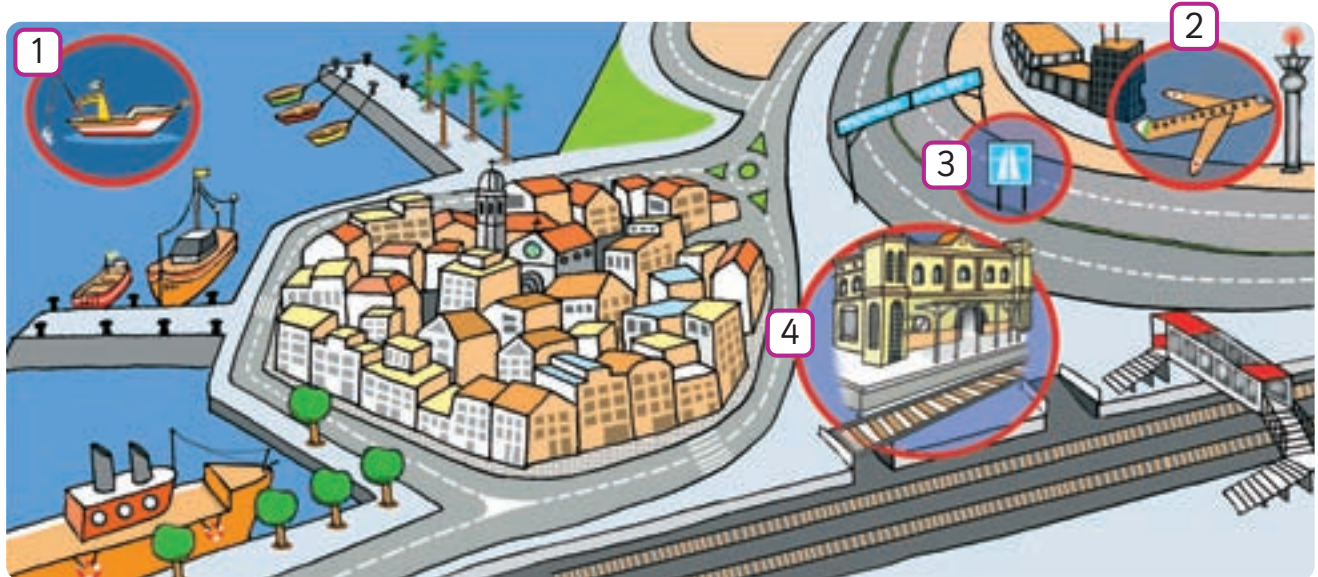
2 Who is following the road rules and who is not? **Make a list.**



My progress

Transport and communication

- 1 Copy and label the picture.



- 2 Which different types of roads do you know? Give an example of each.
- 3 What is a motorway? Draw one.
- 4 Link these definitions with their pictures.



A warning sign tells drivers that there is a hazard on the road.

1

A prohibition sign prohibits certain actions or establishes speed limits.

2

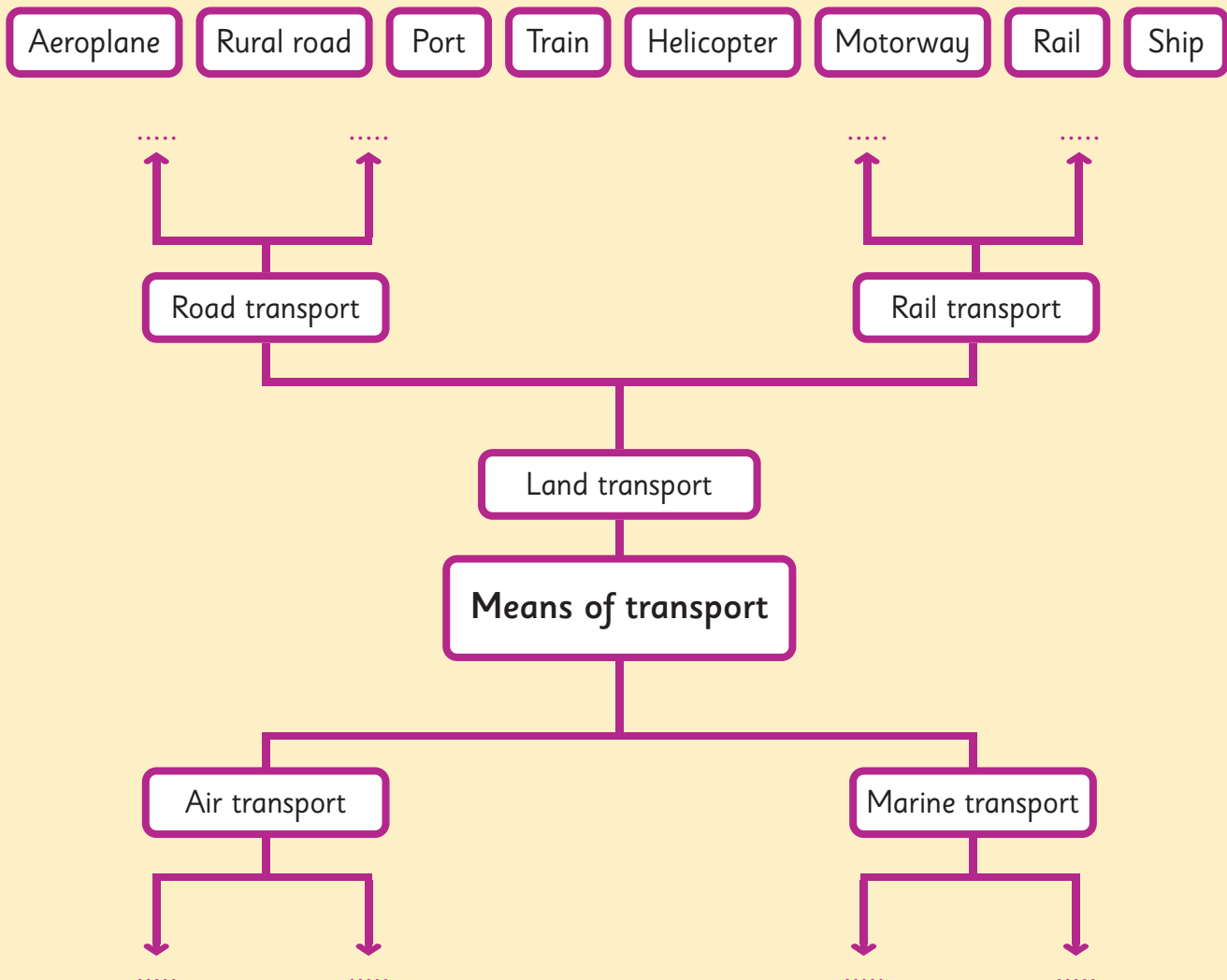
Mandatory signs indicate a specific action or restriction.

3

- 5 Write an SMS to a friend.

Organising what I know

- 1 Copy and complete the mind map.
Use the words in the boxes.



- 2 Can you add more words?

- 3 Listen to the definitions. Which parts of a road are described? 48

- 4 What do these traffic signs mean?

